

## #040 HOW TO ENSURE THE SAFETY OF WAREHOUSES/SITES AT A STANDSTILL OR IN PARTIAL OPERATION?

Distribution

Industriel

Entrepôt

**With warehouses at a standstill, due to a lack of flow or in partial activity, it is important to review all the safety measures put in place to protect oneself:**

- › Of any malicious intervention that creates additional disruptions and problems
- › Of the risk of an increase in break-ins, particularly for sites that are sometimes vulnerable, isolated or far from the passage of law enforcement.

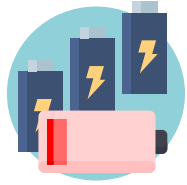
**HERE IS A NON-EXHAUSTIVE CHECK-LIST OF POINTS TO CHECK/VERIFY/TEST ON THE WAREHOUSE AND ITS SURROUNDINGS (AVAILABILITY AND OPERATION):**



Surveillance/television team, external storage of surveillance video,  
Positionnement et orientation adéquate



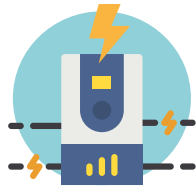
Proper positioning and orientation of surveillance cameras and cleanliness of optics



Alarms and backup batteries  
(in case of power failure)  
with sufficient autonomy.



Centralization and control of the keys of  
machines and trucks to prevent their use



Integrity of the fence of the land  
and the warehouse, good closing of the  
dock doors.



Not forgetting to keep law enforcement  
correspondents informed of the possible  
closure.



Securing of high value products  
(e.g. IOT hidden in products and  
geofencing with alert)

***This situation can be an opportunity to engage or rather (due to lack of own resources) to plan optimization work, to imagine shared solutions with other nearby sites.***

---



## Benoit Lescaret

Consulting, expert in Supply Chain & Logistics management, innovation enthusiastic, Supply Chain Performance Auditor (ASLOG), ELA Certified



Expert in Supply Chain management. Strong experiences with LSP and their clients. Design and implementation of end to end solutions, structure and management of operations in complex environments with success. Consulting from strategic level to operations & design of innovative pragmatic solutions.

### | About ASLOG

**ASLOG brings together more than 400 companies from all sectors**, with 2,000 professionals working together to promote and build tomorrow's Supply Chain. ASLOG is a neutral and independent association that addresses Supply Chain issues.

**As early as 1972, visionary men sensed that this function would be decisive for all companies.** For almost fifty years, professionals in the sector have made ASLOG the reference partner.

ASLOG is the privileged interlocutor of institutions and public authorities on all questions relating to the sector.

### | #supplychain4good

The **#SupplyChain4Good** community was created at the initiative of Michelin and ASLOG, as part of the Movin'On ecosystem, in favor of a more sustainable mobility of goods.

**#SupplyChain4Good's** ambition is to federate the actors who work for Supply Chains that are simultaneously good for the planet, the people and the business performance. The members of this community are «shippers» (industrial and commercial companies), «operators» (transporters, logisticians, shipping companies, ports...), «support functions» (academics, consultants, information systems, regulators, NGOs...).

They cover all economic sectors and all regions of the world. Their work takes place throughout the year and culminates in the annual Movin'On Summit, the world summit on sustainable mobility.



140 bis rue de Rennes - 75006 PARIS  
[www.aslog.fr](http://www.aslog.fr)



aslog



@aslog\_france